

# Super inkjet printer: Entry model

- ◇ Fine patterning  
Minimum line width: 20μm
- ◇ Wide range of viscosity  
Viscosity: 0.5 – 10 000mPa·s (non-heated)
- ◇ Fast and large-area print  
Maximum area: 450mm square

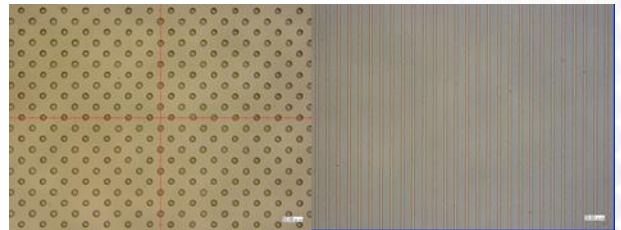


## Technology & Advantages

- Super Inkjet technology allows the ejection of micro droplets much smaller than the droplets ejected by a conventional inkjet printer—1/10 smaller in size and 1/1000 smaller in volume.
- With this model, you can try Super Inkjet technology at a reasonable price.
- The print resolution is as fine as 20μm, still hardly achievable with conventional inkjet printers.
- Thin film patterning is also feasible in spray mode.
- The printer can be placed on a desktop and operates in ambient environment.

## Usability

- Nozzle:  
Disposable, low cost, easily-exchangeable
- Camera:  
A close-up live observation of printing



Dots: 30μm diameter  
UV-curable ink

Line: 20μm width  
Resist

## Specification

Type	SOET-1818 (Not including PC, monitor and software)
Data format	Vector data
Patterning design	Arbitrary shape (dot, line, circle, arc, spiral)
Print area	150mm × 150mm
Number of nozzles	1 (Single)
Repeatability of work stage	±6μm
Camera	Real-time observation camera
Power	AC100V, 50/60Hz (A transformer is necessary for some areas)
Body size	400mm(W) × 450mm(D) × 660mm(H)
Weight	Approximately 50kg